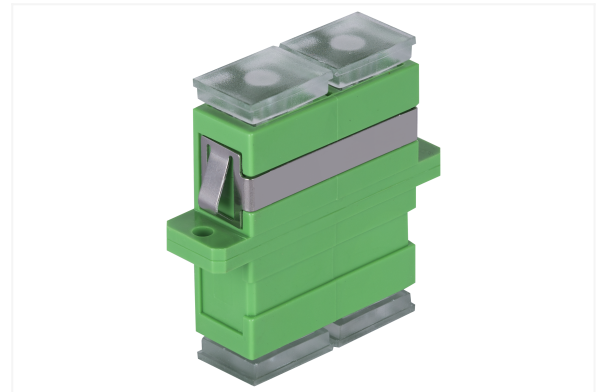


6824 2 273-12-ISP

SM SC/APC duplex adapter

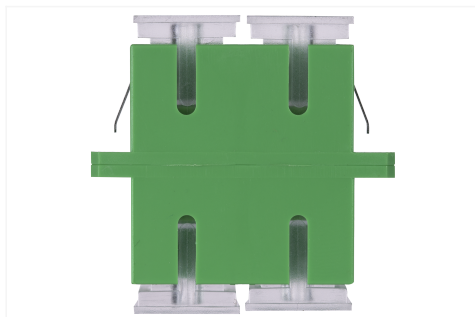
The SM SC/APC duplex single-mode fiber optic adapter is a reliable and precise component used in fiber optic networks to connect single-mode patch cords terminated with SC/APC connectors. Thanks to their design, SC/APC connectors ensure low back reflection, which is particularly important in high-bandwidth and long-distance applications. Due to these properties, they are especially useful in environments where high reliability and data transmission quality are required. SM SC/APC duplex adapters are commonly used in fiber optic distribution frames, junction boxes, subscriber outlets, and data centers.



Technical specifications

SM SC/APC duplex adapter

IL attenuation	0,2 dB
Type of adapter	SM
Adapter type	SC/APC
Adapter version	duplex
Operating temperature range	-40°C / +85°C



High-precision centering

The adapter enables precise centering of 2.5mm diameter ferrules, which guarantees low signal loss and high connection quality. Precise centering minimizes signal loss and ensures low attenuation of the connection.

Very low insertion loss

The adapter features very low insertion loss, which is crucial for maintaining high data transmission quality in fiber optic networks. The insertion loss of SC/APC duplex adapters is 0.2 dB, making them ideal for use in demanding network environments.

SC/APC design

The APC (Angled Physical Contact) connectors have an 8-degree bevel angle, which reduces reflection and improves signal quality. SC (Subscriber Connector) connectors are standard in many fiber optic applications, providing ease of use and durability.