



01S3-BAL1-0xxx

Single Mode SC/APC-LC/PC simplex patchcord

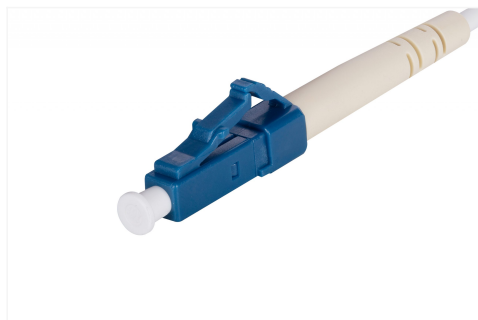
The single-mode SC/APC-LC/PC simplex patch cord is a crucial element in modern fiber optic networks, enabling high-quality and reliable connections between devices with different connector types. Thanks to the SC/APC and LC/PC connectors, this patch cord provides signal stability and minimal losses, which is essential for efficient data transmission. Simplex fiber optic patch cords are segments of optical fibers terminated with connectors on both ends. They are manufactured as standard with an internal cable diameter of 2.0mm, 2.4mm, or 2.8mm. There is a possibility of manufacturing with special cable and in a conduit.



Technical specifications

Single Mode SC/APC-LC/PC simplex patchcord

Insertion loss (IL)	0,25 dB
Return loss (RL) of a APC connector	min. 60dB
Return loss (RL) of a PC connector	min. 45dB
Connector type I	SC/APC
Connector type II	LC/PC



High Signal Quality

The patch cord ensures high signal quality thanks to precisely manufactured 2.5 mm diameter ferrules, which is crucial for maintaining optical signal integrity.

Low Attenuation

The patch cord is characterized by very low attenuation, typically below 0.3 dB, which is essential for maintaining efficient and reliable data transmission.

Connector Type

SC/APC (Angled Physical Contact) connectors minimize signal reflections due to their 8-degree angled cut, which improves transmission quality. LC/PC (Physical Contact) connectors ensure direct ferrule contact, which reduces signal loss.