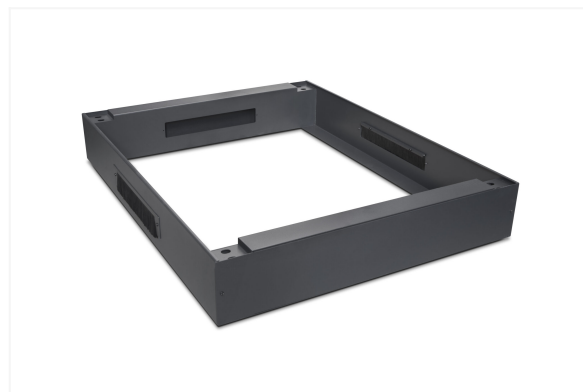


CCAS-C-0608S

Plinth base with brush panel for CCSS-0608-xxU

150 mm high metal plinth with 2 brush cable entries for CCSS series cabinets, size 600×800 mm. The cable entries allow for routing a large quantity of telecommunications cables into the cabinet from below. Useful in situations where there is no raised floor in the installation.



Technical specifications

Plinth base with brush panel for CCSS-0608-xxU

Dimensions	600*800mm
Height	150 mm
Material	steel sheet
Color	RAL 9005

