

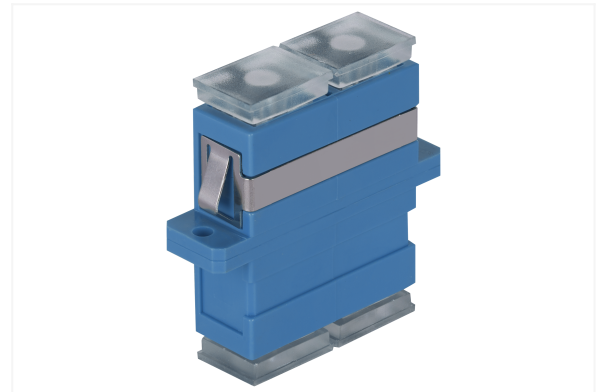
6824 2 273-13-ISP

Adapter SM SC/PC duplex

The SM SC/PC duplex single-mode fiber optic adapter is a reliable component used in fiber optic networks for connecting single-mode patch cords terminated with SC/PC connectors.

Thanks to its design, it ensures stable connections with high signal quality and minimal loss, which is essential for efficient data transmission.

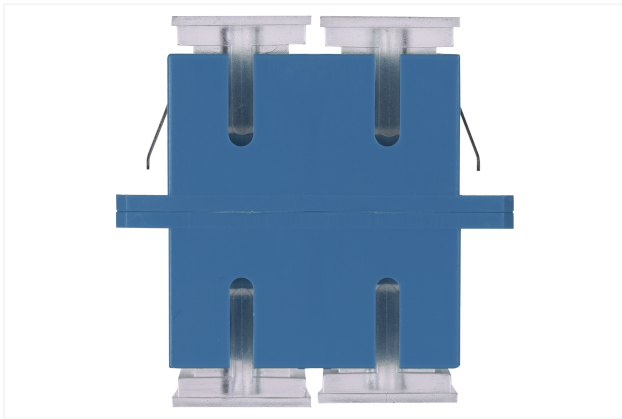
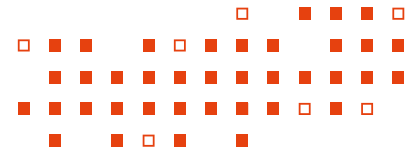
SC/PC duplex single-mode adapters are widely used in telecommunications networks, data centers, CATV systems, broadband networks, as well as in military and medical applications. Due to their properties, they are particularly useful in environments where high reliability and transmission quality are required.



Technical specifications

Adapter SM SC/PC duplex

IL attenuation	0,2 dB
Type of adapter	SM
Adapter type	SC/PC
Adapter version	duplex
Operating temperature range	-40°C / +85°C



High centering precision

The adapter ensures precise alignment of the connected 2.5 mm ferrules, which is crucial for maintaining optical signal integrity. Accurate centering minimizes signal loss and ensures low insertion loss.

Very low insertion loss

The adapter features very low insertion loss, which is essential for maintaining high-quality data transmission in fiber optic networks. The insertion loss of SC/PC duplex adapters is 0.2 dB, making them ideal for use in demanding network environments.

Connector type

PC (Physical Contact) connectors ensure direct contact between ferrules, minimizing the air gap between them and reducing signal reflection, which improves transmission quality. SC (Subscriber Connector) connectors are a standard solution in many fiber optic applications, offering ease of use and durability.